

ACCESSORIES

SWEDGES

Stock Sizes

7 1/16" 3M - 8" ANSI

7 1/16" 3M - 9" 3M

9" 3M - 8" ANSI

9" 3M - 10" ANSI

9" 3M - 11" 3M

11" 3M - 10" ANSI

Other sizes and configurations available upon request



STARTING MANDRELS

Stock Sizes

4 1/2" IF

4 1/2" XH

Other sizes and configurations available upon request



TRIP NIPPLES

1356 12" - 60" - *Height upon request*



CASING RUNNERS

Stock Sizes

1357 11" - 13 5/8" Bowl

1357-20 20" Surface Bowl

1357-21 21 1/4" Bowl

1357-24 24" Surface Bowl

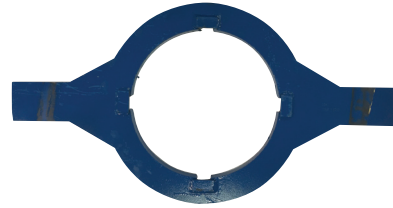
1357-30 Traditional 30" Surface Bowl

1357-30T True 30" Surface Bowl



STRIPPER RUBBER WRENCHES

For use with 1300 Series (Screw-on rubbers)



SPACER SPOOLS

Built to Order

11" 3/5M

13 5/8" 3/5M

16 3/4" 5M

21 1/4" 2M

Slotted/Single/Double Drilled – Per Request



FLANGES

RTJ

7 1/16" 3M

9" 3M

11" 3M

13 5/8" 3M

13 5/8" 5M

16 3/4" 5M

21 3/4" 2M

ANSI/ASME

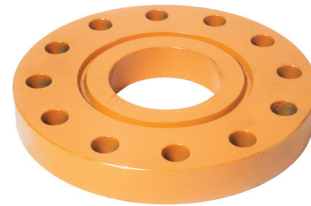
8" 150 ANSI

10" 150 ANSI

24" ASME

30" ASME

Studs and nuts available



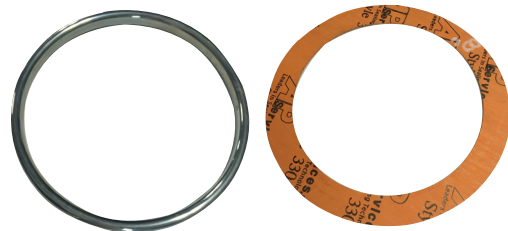
GASKETS

Ring Gaskets

All major sizes from 7 1/16" - 21 1/4"

Paper Gaskets

8", 10", 24", 30"



BOWL SEALS

1026-P4U 11" - 13 5/8" Bowl

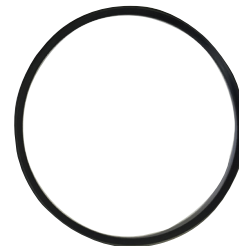
1026-P20U 20" Surface Bowl

1026-P21U 21 1/4" Bowl

1026-P24U 24" Surface Bowl

1026-P30U Traditional 30" Surface Bowl

1026-P30TU True 30" Surface Bowl



Washington Rotating Control Heads, Inc.

P: 724.228.8889 | F: 724.228.8912

63 Springfield Avenue | P.O. Box 261

Washington, PA 15301

www.washingtonrotating.com

Arch Rental, LLC

P: (724) 228-1220 | F: (724) 228-8912

63 Springfield Avenue | P.O. Box 261

Washington, PA 15301

www.archrental.com

Our test pressures have been established through controlled test procedures. As a result of the ever-changing environment of well drilling operations along with wear and tear on equipment, which erodes longevity and safe operating parameters, Washington Rotating Control Heads, Inc., its Business Units, Agents and Affiliates make no warranty either expressed or implied on the test pressures contained herein. Washington Rotating Control Heads, Inc. does not under any circumstances recommend that its rotating control devices be used as primary blow out prevention equipment.